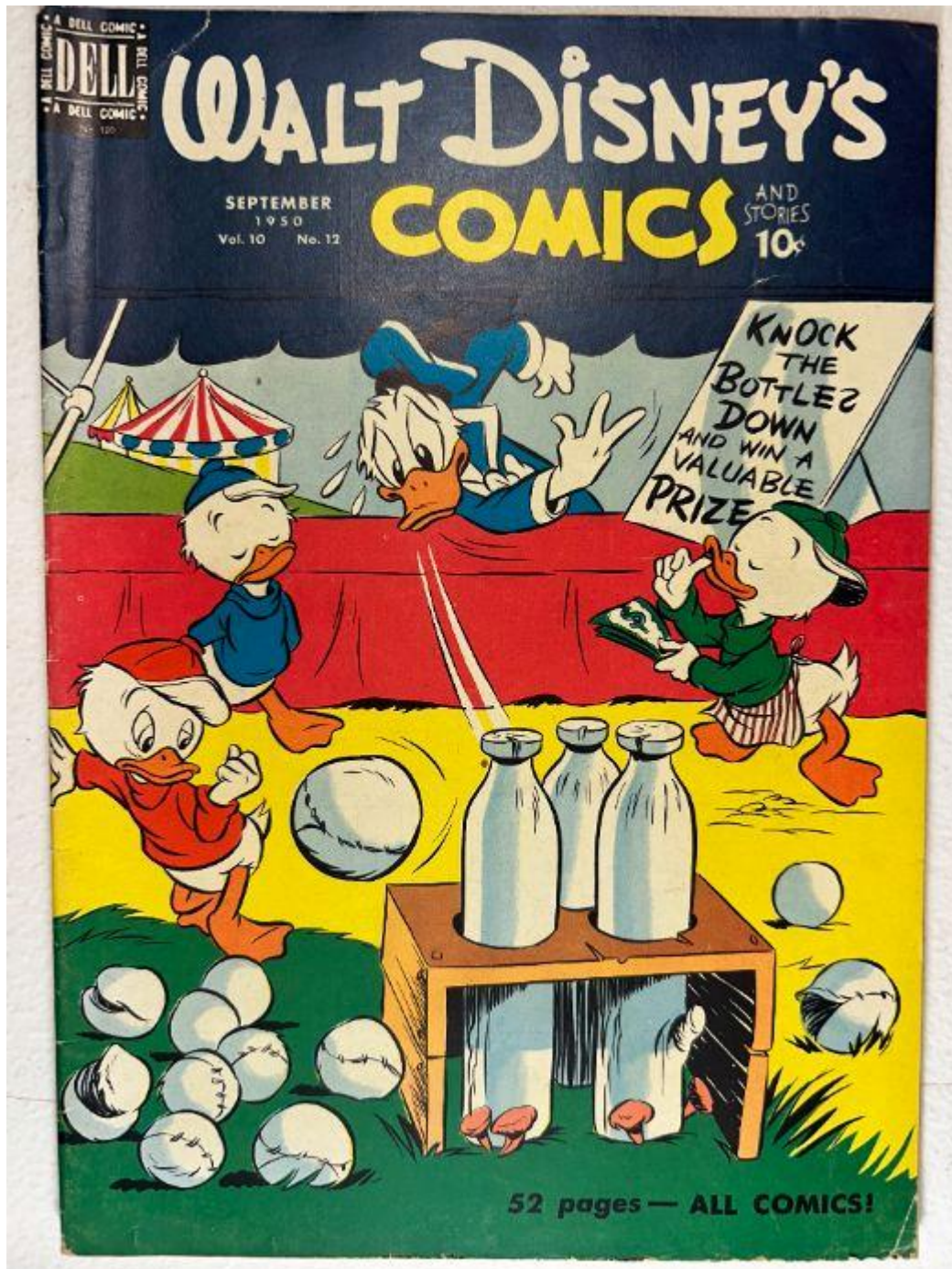


**Walt Disney's Comics and Stories – Vol. 10 No. 12
(September 1950)**

Evaluation Date: April 5, 2026



SUMMARY OF OBSERVATIONS

Walt Disney's Comics and Stories – Vol. 10 No. 12 (September 1950)

The front cover presents with excellent retained color saturation across the blue, red, yellow, and green fields, with bold, well-defined character artwork and clear masthead lettering. The cover surface appears generally smooth and visually strong at first inspection, with no large creases, tears, or surface breaks running across the central image. Closer inspection reveals localized wear concentrated along the bottom spine edge and lower cover edge, where shallow paper disturbance and minor abrasion are visible. These areas show light rubbing with exposed fiber tips rather than deep paper loss, suggesting handling wear rather than structural failure.

Interior examination indicates a complete and intact book. The inside front cover and interior pages show uniform age-related toning consistent with early-1950s Dell paper stock, darker toward the margins but without staining or water disturbance. Color printing remains strong and well registered throughout the interior pages. The spine retains integrity without a full split, though small areas of edge wear and compression are visible along the fold. Both staples remain present and seated, with light paper compression at the staple legs but no pull-through observed. The centerfold remains attached. The brittleness test image shows the paper flexing without visible fiber fracture. Overall, the book presents as a visually attractive copy with **excellent color** and **localized, measurable edge and spine wear** rather than pervasive defects.

Special Interest Evaluation:

Walt Disney's Comics and Stories Vol. 10 No. 12 is part of the core early-1950s run of the longest-running Disney anthology series. Issues from this period are of sustained collector interest due to their consistent Donald Duck content, mid-century Disney cover art, and stable demand across a wide range of conditions. This issue does not appear to be a key or landmark issue but remains representative of the high-interest core run for the title.

FRONT COVER — OBSERVATIONS

Walt Disney's Comics and Stories – Vol. 10 No. 12 (September 1950)

Photo Validation (img_2293 Front Cover)

The image is evenly lit, sharply focused, and fully frames the entire front cover, including all edges, corners, and the spine. Resolution is sufficient to inspect color saturation, edge wear, paper texture, and ink clarity. The photo is adequate for detailed evaluation.

Scene & Composition

The cover depicts Donald Duck and his nephews engaged in a carnival game involving bottles and balls, set against a circus-themed background. The scene is rendered with large, bold color areas and centrally arranged characters under the series masthead.

Findings

The cover colors remain vivid and evenly saturated, with no obvious fading. The masthead lettering is clean and fully legible. Along the **bottom edge**, particularly near the spine corner, light abrasion is visible, presenting as shallow scuffing and exposed paper fibers over approximately **~18–22 mm**. The **lower spine edge** shows minor rubbing and compression, with small nicks and softened paper fibers spanning approximately **~15–20 mm**. Corners exhibit light rounding, slightly heavier at the lower corners, without missing paper. No writing, stains, tears, or large creases are visible on the front cover surface.

Overall Impression

The front cover is visually strong with excellent color and minimal defects, limited primarily to light edge and spine wear.

BACK COVER — OBSERVATIONS

Walt Disney's Comics and Stories – Vol. 10 No. 12 (September 1950)

Photo Validation (img_2294 Back Cover)

The photo is in focus, evenly lit, and clearly shows the entire back cover, edges, corners, and spine edge.

Findings

The back cover shows uniform tan/cream toning consistent with age. Subscription and advertisement text remains legible. Light edge wear is visible along the bottom edge over approximately **~20–25 mm**. Corner rounding is present, more pronounced at the lower corners. The spine edge shows minor wear consistent with the front cover, without splitting or loss.

Overall Impression

The back cover is intact with light, age-consistent wear only.

FREE WALT DISNEY CIRCUS PICTURE

A beautifully colored copy of this picture The Disney Gang "At the Circus" will be sent you free with every subscription to Walt Disney's Comics and Stories.



SUBSCRIBE NOW TO WALT DISNEY'S COMICS AND STORIES



Actual size of picture 10 1/4" x 14 1/2"



The only magazine of authentic Disney characters pledged to clean, wholesome humor. It contains the best in art work, coloring and readability. Approved by parents and teachers everywhere. Suitable for everyone, from ages 3 to 90.

Mail to: K. K. PUBLICATIONS, Inc. DEPT. 9 Poughkeepsie, N. Y.

Enclosed please find \$_____ for which please send a _____ year subscription to **WALT DISNEY'S COMICS AND STORIES** and the Free Circus Picture to:

PLEASE PRINT
 Name _____
 Street and Number _____
 City or Town _____ Mailing Dist. No. _____ State _____
 Donor's Name _____
 Street and Number _____
 City or Town _____ Mailing Dist. No. _____ State _____

SUBSCRIPTION RATES
 5 years—\$4.00 3 years—\$2.50 2 years—\$1.75 1 year—\$1.00



INSIDE FRONT COVER — OBSERVATIONS

Walt Disney's Comics and Stories – Vol. 10 No. 12 (September 1950)

Photo Validation (img_2295 Inside Front Cover)

The image is straight-on and well lit, clearly showing the full inside front cover and hinge area.



Findings

Paper color is cream. No writing, stamps, subscription marks, or stains are visible. The hinge shows light compression but no tearing or separation. The indicia is visible and legible, confirming issue identification.

Overall Impression

The inside front cover is clean and well preserved.

INTERIOR PAGES — OBSERVATIONS

Walt Disney's Comics and Stories – Vol. 10 No. 12 (September 1950)

Photo Validation (img_2296–img_2299 Inside Pages)

The interior page images are clear, evenly lit, and in focus, with margins and gutters fully visible.

Page Color

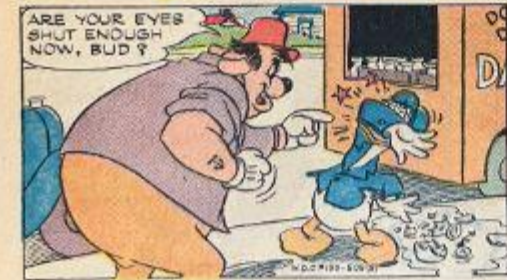
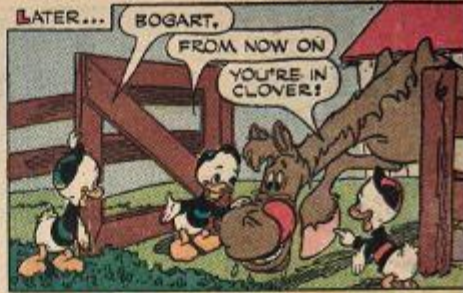
Cream to light tan.

Findings

Interior pages show uniform age-related toning, darker toward the margins by approximately ~5–7 mm. Color printing remains vivid and consistent. Minor edge waviness is visible on some pages, presenting as gentle undulation rather than creasing. Page corners show slight softening, with no missing material. No writing, stains, or interior tears are visible. Gutters remain intact.

Overall Impression

Interior pages are complete, clean, and visually strong with minor, age-consistent wear.







I CAN'T SEE OUT!
MY HAT IS STUCK!
COME DOWN AND LEND
A HAND HERE, BUCK!



I'M RIGHT
HERE, PAL!
I'LL GET
YOU FREE!

BE CAREFUL,
BUCK!
YOU'RE
SCALPING ME!

THEY PULLED AND TUGGED
UNTIL THEY FOUND
THEMSELVES - KER-SWACK--
UPON THE GROUND!



B-Z-Z-Z-Z

SAY! I HEAR
BUZZ COMIN', QUICK!

LET'S HIDE
AND DO
OUR SCARIN'
TRICK!



BEHIND THIS ROCK
WILL BE OKAY!



CLOMP!
CLOMP!

HE'S HEADIN'
RIGHT THIS WAY!



IT'S MARTY MOTH!
WHAT HAS HE GOT?

A THING
AS LIKIN' AM
STOLE,
NOT!

MICKEY MOUSE

Monarch of Medioka

A WALT DISNEY STORY



MICKEY ACTING AS KING OF MEDIOKA IS GRADUALLY BRINGING PROSPERITY BACK TO THE COUNTRY! TAXES AND SPENDING ARE CUT, THE MONARCH IS POPULAR, AND THINGS LOOK ROSY...UNTIL MICKEY LEARNS HE MUST MARRY PRINCESS PHYLLINE!

WHADDYA MEAN...I'M GONNA MARRY PRINCESS PHYLLINE?

ZAT ISS RIGHT! UND A FINE MATCH IT WILL BE, TOO! SHE ISS A LUFFLY GIRL!

LOVELY GIRL, NUTHIN! I'M NOT GONNA DO IT...AN THAT'S THAT! GOSH! WHAT GOOD WOULD IT DO ME TO MARRY HER?

SHE WOULDN'T GO HOME WITH ME...AN I'M NOT GONNA STAY HERE ALL MY LIFE...AN SHE LOVES MICHAEL, NOT ME...AN...AN ANYWAY, THERE'S MINNIE, AN'...

BUT IT ISS YOUR DUTY! YOU PROMISED TO BE KING...UND A KING MUST HAAFF A QUEEN, MUSTN'T HE?

MAYBE SO! BUT SHE'S GONNA BE MICHAEL'S QUEEN, NOT MINE!

NO, SIR! I'M WILLING TO DO THAT GUY'S JOB ON THE THRONE...BUT I'LL BE DOGGONED IF I'LL DO IT AT HIS WEDDING!

WHILE MICKEY IS WORRYING ABOUT STATE PROBLEMS IN MEDIOKA, HIS DOUBLE, KING MICHAEL XIV, IS ENJOYING A VACATION IN A FOREIGN CAPITAL...INCOGNITO!

MORE CANAR...PATE...CHAMPAGNE... FOR EFERYBODY!

YES, SIR!

YES, SIR!



CENTERFOLD — OBSERVATIONS

Walt Disney's Comics and Stories – Vol. 10 No. 12 (September 1950)

Photo Validation (img_2300 Centerfold)

The image clearly shows the full centerfold, fold line, and both staples.



Findings

The centerfold remains attached at both staples. The fold line shows mild compression without tearing or splitting.

Overall Impression

The centerfold is secure and stable.

SPINE — OBSERVATIONS

Walt Disney's Comics and Stories – Vol. 10 No. 12 (September 1950)

Photo Validation (img_2301 Spine)

Side-profile image clearly shows the full spine length and adjacent cover edges.



Findings

The spine shows light rubbing and compression along the fold, with softened fibers and small nicks extending approximately **~15–20 mm**. No full spine split is visible, and alignment remains straight.

Overall Impression

Spine condition is stable with minor wear only.

STAPLES — OBSERVATIONS

Walt Disney's Comics and Stories – Vol. 10 No. 12 (September 1950)

Upper Staple

Photo Validation (img_2302 Upper Staple)

Macro image is clear and well lit, showing the staple and surrounding paper.



Findings

The upper staple is seated. Surrounding paper shows light compression extending approximately ~3–4 mm, without tearing or pull-through.

Overall Impression

Upper staple is intact with minor localized stress.

Lower Staple

Photo Validation (img_2303 Lower Staple)

Macro image clearly frames the staple, spine fold, and adjacent paper.



Findings

The lower staple remains embedded. Surrounding paper shows light compression similar to the upper staple, approximately **~3–4 mm**, with no visible tearing.

Overall Impression

Lower staple condition is stable.

BRITTLENESS TEST — OBSERVATIONS

Walt Disney's Comics and Stories – Vol. 10 No. 12 (September 1950)

Photo Validation (img_2304 Brittleness Test)

The image clearly shows an interior page being flexed, with adequate lighting and focus.



Findings

The page bends in a smooth arc without visible fiber cracking, flaking, or fragmentation.

Overall Impression

The tested page demonstrates retained flexibility.